

VetroMount® Railings

The next generation in glass railing systems



portals
A Bohle family company

One system with countless possibilities

THE NEXT GENERATION IN GLASS RAILING SYSTEMS.

The patented VetroMount Railing System offers an efficient solution to the installation of a high-quality structural dry glazed railing. The patented system offers the installer significant savings in labor while providing a safe and code compliant guard rail, meeting the most stringent building code standards when properly installed.

PRODUCT HIGHLIGHTS

- Available in two architectural finishes: Brushed Stainless Steel and Matte Black
- Handrail brackets suitable for wall, glass, or post installations.
- All handrail brackets are supplied in kits including flat, 1.50", 1.66" and 1.90" saddles as standard.
- Handrail brackets are height adjustable and available with fixed or adjustable saddles.
- All handrail brackets are manufactured from Grade 316 Stainless Steel as standard.



VetroMount offers ICC-ES compliant solutions under ICC-ESR-4924. For more information or to view the evaluation report, visit www.icc-es.org.





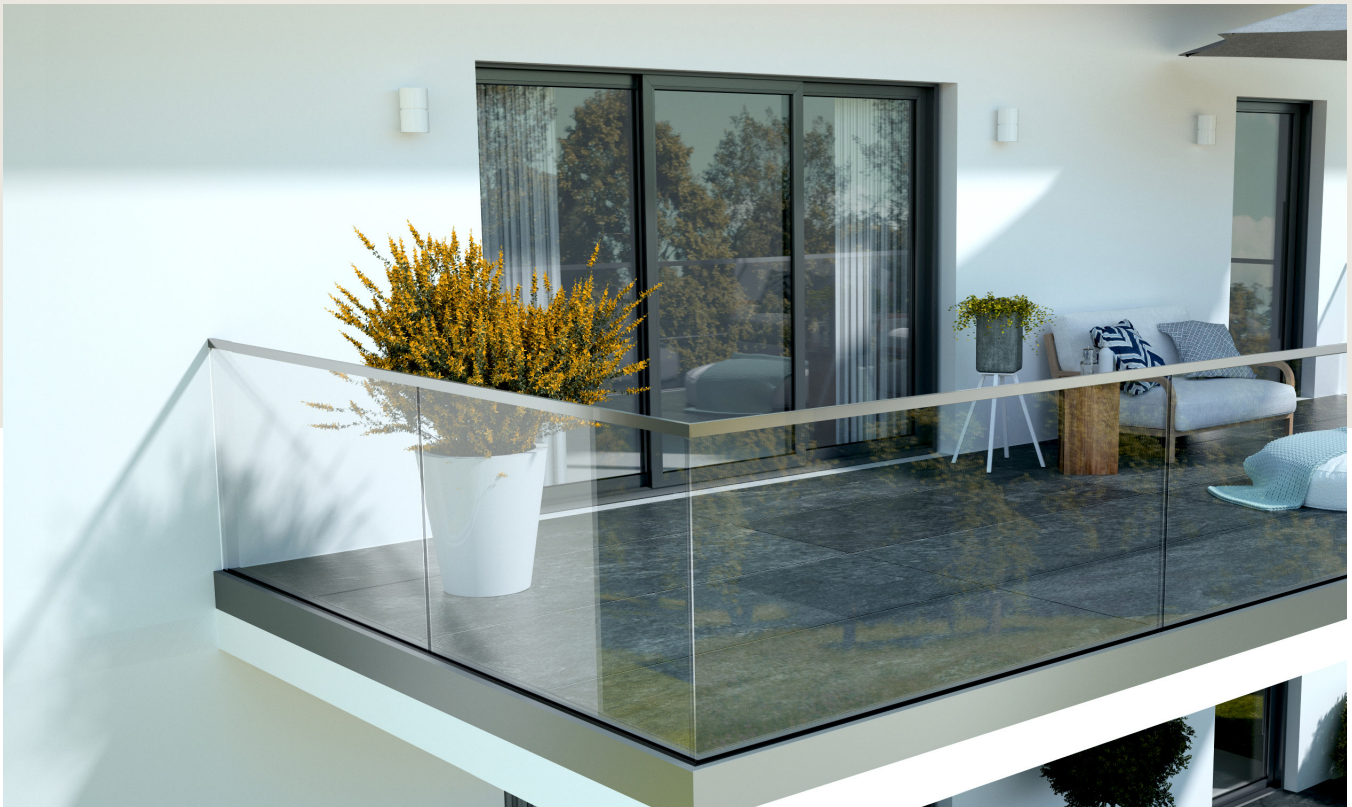
VETROMOUNT® RAILING SYSTEMS

VETROMOUNT® Dry Glaze	4
VETROBASE Wet Glaze	8
VETROPOST Posts	12
VETROPOINT Standoffs	16
VETROCLAMP Spigots	18
VETORAIL Handrails	23

VetroMount®

► DRY GLAZE

Revolutionize your glass installations with our versatile dry glaze base shoe system, meticulously crafted from extruded T66 aluminum for robust structural support. Featuring surface mounting and fascia mount options, our base shoe provides flexibility in installation, ensuring a seamless fit into diverse architectural designs.



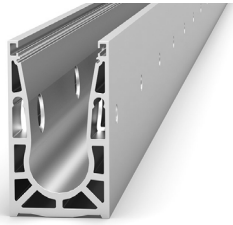
Now available with cladding options in premium 316 Stainless Steel, including Brushed Stainless and Matte Black finishes, our base shoe offers both enhanced durability and a sleek aesthetic appeal.

With its ICC certification, this base shoe offers safety and compliance while requiring only two tools for hassle-free installation.

Embrace glass tilt adjustability for precise alignment, allowing for flawlessly aligned and visually captivating glass setups.

Elevate your projects with our innovative, adaptable, and stylish dry glaze base shoe system, marrying structural integrity with design finesse.

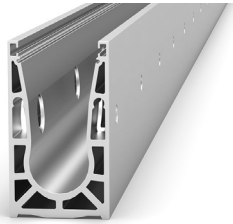
VETROMOUNT® Dry Glaze



Base Shoe

Material: Aluminum

DESCRIPTION	GLASS SIZE	FINISH	LENGTH	ITEM
Surface mount	1/2" - 13/16"	Mill	10 ft	VBS-SM120-AMI
Surface mount	1/2" - 13/16"	Mill	20 ft	VBS-SM240-AMI



Base Shoe

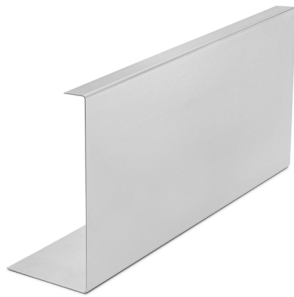
Material: Aluminum

DESCRIPTION	GLASS SIZE	FINISH	LENGTH	ITEM
Fascia mount	1/2" - 13/16"	Mill	10 ft	VBS-FM120-AMI
Fascia mount	1/2" - 13/16"	Mill	20 ft	VBS-FM240-AMI



Surface Mount Cladding

GLASS SIZE	FINISH	MATERIAL	LENGTH	ITEM
1/2" - 9/16"	Brushed Stainless	Stainless Steel 316	10 ft	VCD-SM901-SBR
1/2" - 9/16"	Matte Black	Aluminum	10 ft	VCD-SM901-AMB
11/16" - 3/4"	Brushed Stainless	Stainless Steel 316	10 ft	VCD-SM902-SBR
11/16" - 3/4"	Matte Black	Aluminum	10 ft	VCD-SM902-AMB
13/16"	Brushed Stainless	Stainless Steel 316	10 ft	VCD-SM903-SBR
13/16"	Matte Black	Aluminum	10 ft	VCD-SM903-AMB



Fascia Mount Cladding

GLASS SIZE	FINISH	MATERIAL	LENGTH	ITEM
1/2" - 9/16"	Brushed Stainless	Stainless Steel 316	10 ft	VCD-FM901-SBR
1/2" - 9/16"	Matte Black	Aluminum	10 ft	VCD-FM901-AMB
11/16" - 3/4"	Brushed Stainless	Stainless Steel 316	10 ft	VCD-FM902-SBR
11/16" - 3/4"	Matte Black	Aluminum	10 ft	VCD-FM902-AMB
13/16"	Brushed Stainless	Stainless Steel 316	10 ft	VCD-FM903-SBR
13/16"	Matte Black	Aluminum	10 ft	VCD-FM903-AMB



Cladding Strip

GLASS SIZE	FINISH	LENGTH	ITEM
1/2" - 9/16"	Brushed Stainless	10 ft	WCD-FM904-SBR
1/2" - 9/16"	Matte Black	10 ft	WCD-FM904-AMB
11/16" - 3/4"	Brushed Stainless	10 ft	VCD-FM905-SBR
11/16" - 3/4"	Matte Black	10 ft	VCD-FM905-AMB
13/16"	Brushed Stainless	10 ft	VCD-FM906-SBR
13/16"	Matte Black	10 ft	VCD-FM906-AMB



Self-Adhesive Gasket

Material: Black Rubber

DESCRIPTION	LENGTH	ITEM
Universal gasket	20 ft	VGA-UN020-RBL
Universal gasket	100 ft	VGA-UN100-RBL

- High bond
- Adhesive mount

Inner / Outer Gaskets without Cladding

Material: Black Rubber



GLASS SIZE	LENGTH	ITEM
1/2" - 9/16"	20 ft	VGA-12020-RBL
1/2" - 9/16"	100 ft	VGA-12100-RBL
5/8" - 3/4"	20 ft	VGA-58020-RBL
5/8" - 3/4"	100 ft	VGA-58100-RBL
13/16"	20 ft	VGA-34020-RBL
13/16"	100 ft	VGA-34100-RBL

- Push fit
- Inner and outer gasket included



End Cap

Material: Stainless Steel 316

DESCRIPTION	FINISH	ITEM
Surface mount	Brushed Stainless	VEC-SM901-SBR
Surface mount	Matte Black	VEC-SM901-AMB
Fascia mount	Brushed Stainless	VEC-FM901-SBR
Fascia mount	Matte Black	VEC-FM901-AMB

- Sold individually
- Glue on



Glass Clamps

GLASS SIZE	COLOR	ITEM
1/2 - 9/16"	Yellow	VGC-YE012
5/8"	Green	VGC-GR058
11/16"	Red	VGC-RE111
3/4"	White	VGC-WH034
13/16"	Black	VGC-BL131

- Quantity: pack of 13



Black Vertical Spacers

GLASS SIZE	LENGTH	ITEM
1/2" - 9/16"	39"	VAC-SP381
5/8" - 11/16"	39"	VAC-SP382
13/16"	39"	VAC-SP383

- Can be cut to desired length

HILTI KWIK HUS EZ Anchor Bolts

Material: Stainless Steel 316



DESCRIPTION	QUANTITY	ITEM
3/8" x 4"	x 50	VAC-AN138
1/2" x 4"	x 25	VAC-AN112

Aluminum Drain Blocks

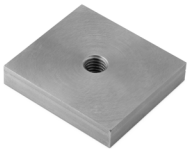


DESCRIPTION	FINISH	ITEM
2.50" x 2.937" x 0.375"	Satin Anodized	VDB-29901-AMI
2.50" x 2.937" x 0.375"	Matte Black	VDB-29901-AMB

- Quantity: pack of 10

- Spaces extrusion from surface to prevent water pooling

Steel Weld Blocks



SIZE	2-1/2" x 2-15/16"
THREAD	1/2" - 13
ITEM	VAC-WB212-SRA

- Quantity: pack of 10



Connector Pins

FOR	Base profile
ITEM	VAC-CP901

Stair Stopper



ITEM	VAC-SS901
------	-----------



Weld Block Screws

SIZE	0.75"
THREAD	1/2" - 13
ITEM	VAC-AN0901

- Quantity: pack of 10

Adhesive Tape



SIZE	3/4" x 108'
ITEM	WCD-AD901



Assembling Tool

ITEM	VAC-AT901
------	-----------

VetroBase

► WET GLAZE

Transform your glass structures with our high-performance wet glaze system, meticulously designed for surface mounting applications.

Crafted for durability and reliability, our wet glaze system offers exceptional adaptability in various architectural settings.



Made from premium-grade materials like extruded T6 aluminum, our system ensures robust support for glass installations.

Additionally, introducing cladding options in premium 316 stainless steel with finishes in Brushed Stainless and Matte Black, our wet glaze system combines strength with a sophisticated aesthetic.

Engineered and stamped calculations available on request. Our system simplifies installation, requiring minimal tools for a seamless setup.

VETROBASE Wet Glaze



2-1/2" Base Shoe

Material: Aluminum

DESCRIPTION	GLASS SIZE	FINISH	LENGTH	ITEM
Surface mount	1/2" - 9/16"	Mill	10 ft	WBS-SM120-AMI
Surface mount	1/2" - 9/16"	Mill	20 ft	WBS-SM240-AMI



2-3/4" Base Shoe

Material: Aluminum

DESCRIPTION	GLASS SIZE	FINISH	LENGTH	ITEM
Surface mount	11/16" - 3/4"	Mill	10 ft	WBS-SM121-AMI
Surface mount	11/16" - 3/4"	Mill	20 ft	WBS-SM241-AMI



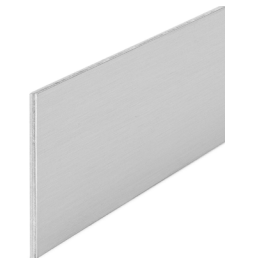
Surface Mount Cladding

GLASS SIZE	FINISH	MATERIAL	LENGTH	ITEM
1/2" - 9/16"	Brushed Stainless	Stainless Steel 316	10 ft	WCD-SM901-SBR
1/2" - 9/16"	Matte Black	Aluminum	10 ft	WCD-SM901-AMB



Fascia Mount Cladding

GLASS SIZE	FINISH	MATERIAL	LENGTH	ITEM
1/2" - 9/16"	Brushed Stainless	Stainless Steel 316	10 ft	WCD-FM901-SBR
1/2" - 9/16"	Matte Black	Aluminum	10 ft	WCD-FM901-AMB
11/16" - 3/4"	Brushed Stainless	Stainless Steel 316	10 ft	WCD-FM902-SBR
11/16" - 3/4"	Matte Black	Aluminum	10 ft	WCD-FM902-AMB



Cladding Strip

GLASS SIZE	FINISH	MATERIAL	LENGTH	ITEM
1/2" - 3/4"	Brushed Stainless	Stainless Steel 316	10 ft	VCD-FM904-SBR
1/2" - 3/4"	Matte Black	Aluminum	10 ft	VCD-FM904-AMB

- For exposed top strip in recessed or fascia applications



Gasket

Material: Black Rubber

DESCRIPTION	QUANTITY	ITEM
Universal gasket seal for glass / grout	20 ft	WGA-UN020-RBL
Universal gasket seal for glass / grout	100 ft	WGA-UN100-RBL

- Roll-in gasket

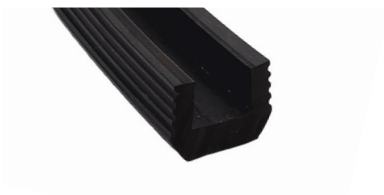


End Caps

DESCRIPTION	SIZE	FINISH	ITEM
Surface mount	2.5" wide	Brushed Stainless	WEC-25902-SBR
Surface mount	2.5" wide	Matte Black	WEC-25902-AMB
Surface mount	2.75" wide	Brushed Stainless	WEC-27902-SBR
Surface mount	2.75" wide	Matte Black	WEC-27902-AMB
Fascia mount	2.5" wide	Brushed Stainless	WEC-25903-SBR
Fascia mount	2.5" wide	Matte Black	WEC-25903-AMB
Fascia mount	2.75" wide	Brushed Stainless	WEC-27903-SBR
Fascia mount	2.75" wide	Matte Black	WEC-27903-AMB

• Sold individually

• Glue on



Rubber Setting Blocks

Material: Black Rubber

DESCRIPTION	GLASS SIZE	ITEM
For easy grouting	1/2"	WSE-SC020
For easy grouting	3/4"	WSE-SC021

• Quantity: pack of 20



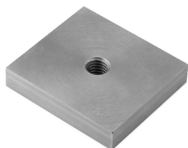
Drain Blocks

Material: Aluminum

DESCRIPTION	SIZE	FINISH	ITEM
2.50" x 2.25" x 0.375"	For 2.5" extrusion	Satin Anodized	WDB-22901-AMI
2.50" x 2.25" x 0.375"	For 2.5" extrusion	Matte Black	WDB-22901-AMB
2.50" x 2.25" x 0.375"	For 2.75" extrusion	Satin Anodized	WDB-27901-AMI
2.50" x 2.25" x 0.375"	For 2.75" extrusion	Matte Black	WDB-27901-AMB

• Spaces extrusion from surface to prevent water pooling

• Quantity: pack of 10



Steel Weld Blocks

SIZE	2-3/4" x 2-1/2"
THREAD	1/2" - 13
ITEM	WWB-27901



Weld Block Screws

SIZE	0.75"
THREAD	1/2" - 13
ITEM	VAC-AN0901

• Quantity: pack of 10



Rockite Fast-Setting Expansion Cement

DESCRIPTION	QUANTITY	ITEM
For interior use	10 lbs	WCE-RT010
For interior use	50 lbs	WCE-RT050

- Set time: 15 minutes
- Self-leveling
- Good to 25° F (-4° C)
- Weight bearing: 2 hours
- Shelf life: indefinite
- Not for wet environments



Kwixset Weatherproof Expansion Cement

DESCRIPTION	QUANTITY	ITEM
For exterior use	25 lbs	WCE-KS025
For exterior use	50 lbs	WCE-KS050

- Set time: 15-20 minutes
- Self-leveling
- Good to 39° F (4° C)
- Weight bearing: 2 hours
- Shelf life: indefinite

VetroPost

▶ POSTS

Revolutionize your project's aesthetics and functionality with our comprehensive post line, now available in striking Matte Black and sleek Brushed Stainless options.



Featuring versatile fascia and surface mounting choices alongside fully adjustable post tops, our 0.142" thick tubing crafted from premium 316 Stainless Steel ensures unrivaled durability.

Whether it's a fascia or surface-mounted application, our posts, are engineered to seamlessly integrate into diverse architectural designs.

With adjustable post tops ensuring adaptability and strength, our post line offers both structural integrity and exceptional aesthetics, making it an ideal choice for projects where resilience and style converge effortlessly.

VETROPOST Posts



Surface Mount End Post

DESCRIPTION

End post with clamps

FINISH

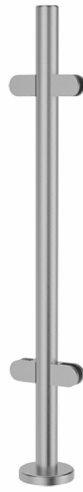
Brushed Stainless
or Matte Black

ITEM

Brushed Stainless:
PRC-EP019-SBR

Matte Black:
PRC-EP019-SMB

- 2 clamps included
- For glass thickness 3/8" - 9/16"
- Material: Stainless Steel 316
- Post top sold separately
- 1.90" O/D, 39-5/16" high
- Use HILTI screws to secure



Surface Mount 180° Intermediate Post

DESCRIPTION

Intermediate post with clamps

FINISH

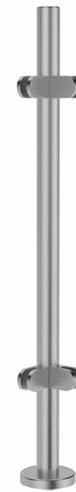
Brushed Stainless
or Matte Black

ITEM

Brushed Stainless:
PRC-IP019-SBR

Matte Black:
PRC-IP019-SMB

- 4 clamps included
- For glass thickness 3/8" - 9/16"
- Material: Stainless Steel 316
- Post top sold separately
- 1.90" O/D, 39-5/16" high
- Use HILTI screws to secure



Surface Mount 90° Corner Post

DESCRIPTION

Corner post with clamps

FINISH

Brushed Stainless
or Matte Black

ITEM

Brushed Stainless:
PRC-CP019-SBR

Matte Black:
PRC-CP019-SMB

- 4 clamps included
- For glass thickness 3/8" - 9/16"
- Material: Stainless Steel 316
- Post top sold separately
- 1.90" O/D, 39-5/16" high
- Use HILTI screws to secure



Fascia Mount End Post

DESCRIPTION

Round end post with clamps

FINISH

Brushed Stainless
or Matte Black

ITEM

Brushed Stainless:
PRC-FE019-SBR

Matte Black:
PRC-FE019-SMB

- 2 clamps included
- For glass thickness 3/8" - 9/16"
- Material: Stainless Steel 316
- Post top sold separately
- 1.90" O/D, 48" high
- Use HILTI screws to secure



Fascia Mount 180° Intermediate Post

DESCRIPTION

Intermediate post with clamps

FINISH

Brushed Stainless
or Matte Black

ITEM

Brushed Stainless:
PRC-FI019-SBR

Matte Black:
PRC-FI019-SMB

- 4 clamps included
- For glass thickness 3/8" - 9/16"
- Material: Stainless Steel 316
- Post top sold separately
- 1.90" O/D, 48" high
- Use HILTI screws to secure



Fascia Mount 90° Corner Post

DESCRIPTION

Corner post with clamps

FINISH

Brushed Stainless
or Matte Black

ITEM

Brushed Stainless:
PRC-FC019-SBR

Matte Black:
PRC-FC019-SMB

- 4 clamps included
- For glass thickness 3/8" - 9/16"
- Material: Stainless Steel 316
- Post top sold separately
- 1.90" O/D, 48" high
- Use HILTI screws to secure

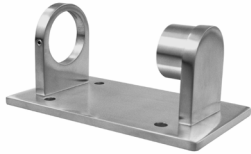


Fascia Mount Bracket Post, Adjustable

Material: Stainless Steel 316

DESCRIPTION	ADJUSTABLE	FINISH	ITEM
For 1.90" O/D	Yes	Brushed Stainless	PRC-BR902-SBR
For 1.90" O/D	Yes	Matte Black	PRC-BR902-SMB

- Height adjustable by 2"
- Use HILTI screws to secure



Fascia Mount Bracket Post, Fixed

Material: Stainless Steel 316

DESCRIPTION	ADJUSTABLE	FINISH	ITEM
For 1.90" O/D	No	Brushed Stainless	PRC-BR901-SBR
For 1.90" O/D	No	Matte Black	PRC-BR901-SMB

- Use HILTI screws to secure

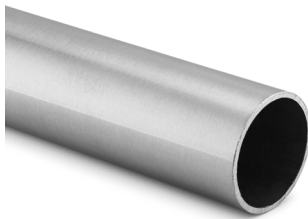


Post Top

Material: Stainless Steel 316

DESCRIPTION	FINISH	ITEM
180° Adjustable height	Brushed Stainless	PRC-TO180-SBR
180° Adjustable height	Matte Black	PRC-TO180-SMB
90° Adjustable height	Brushed Stainless	PRC-TO090-SBR
90° Adjustable height	Matte Black	PRC-TO090-SMB

- Adjustable height and saddle



Post Handrail Tube

DESCRIPTION	TYPE	FINISH	LENGTH	ITEM
1.66" O/D	Sch 40	Brushed Stainless	20 ft	PTU-16901-SBR
1.66" O/D	Sch 40	Matte Black	20 ft	PTU-16901-SMB
1.90" O/D	Sch 40	Brushed Stainless	20 ft	PTU-19901-SBR
1.90" O/D	Sch 40	Matte Black	20 ft	PTU-19901-SMB



Clamp Gasket

Material: black rubber

GLASS SIZE	ITEM
For 3/8" glass	PAC-CG038
For 1/2" glass	PAC-CG012
For 9/16" glass	PAC-CG091



Glass Clamp - Post Round Back

Material: Stainless Steel 316

DESCRIPTION	GLASS SIZE	FINISH	ITEM
For 1.90" O/D tube	3/8" - 9/16"	Brushed Stainless	PAC-GC901-SBR
For 1.90" O/D tube	3/8" - 9/16"	Matte Black	PAC-GC901-SMB

- Includes:
 - glass clamp (x1)
 - glass clamp gasket (x2)



Glass Clamp - Post Flat Back

Material: Stainless Steel 316

DESCRIPTION	GLASS SIZE	FINISH	ITEM
To square post or wall	3/8" - 9/16"	Brushed Stainless	PAC-GC902-SBR
To square post or wall	3/8" - 9/16"	Matte Black	PAC-GC902-SMB

- Includes:
 - glass clamp (x1)
 - glass clamp gasket (x2)



Security Pin

Material: Stainless Steel 316

DESCRIPTION	ITEM
For post glass clamps	PAC-SP901

- Clamps sold separately

VetroPoint

▶ STANDOFFS

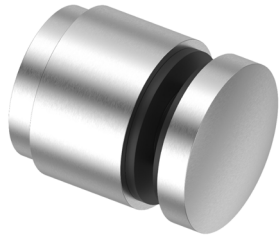
Upgrade the functionality and design adaptability of your glass installations with our range of glass standoffs, available in both adjustable and fixed options.



Designed for effortless usability, our adjustable standoffs offer unparalleled ease in accommodating various glass thicknesses, ensuring a seamless and hassle-free installation process.

Whether opting for the sleek matte black or brushed stainless finishes, our standoffs are crafted from premium-grade materials, including resilient 316 Stainless Steel, providing exceptional durability and corrosion resistance.

VETROPOINT Standoffs

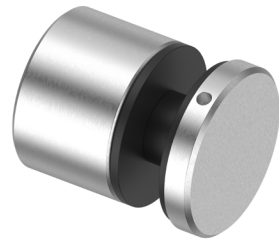


Round Adjustable Standoffs

Material: Stainless Steel 316

DESCRIPTION	GLASS SIZE	FINISH	ITEM
1-3/16" projection	5/16" - 13/16"	Brushed Stainless	OAD-20030-SBR
1-3/16" projection	5/16" - 13/16"	Matte Black	OAD-20030-SMB
1-9/16" projection	5/16" - 13/16"	Brushed Stainless	OAD-20040-SBR
1-9/16" projection	5/16" - 13/16"	Matte Black	OAD-20040-SMB

- Use C spanner or allen key to tighten

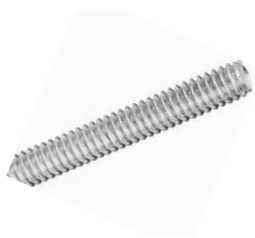


Round Non-Adjustable Standoffs

Material: Stainless Steel 316

DESCRIPTION	GLASS SIZE	FINISH	ITEM
1-1/2" with 1" projection	3/8" - 3/4"	Brushed Stainless	ONA-15010-SBR
1-1/2" with 1" projection	3/8" - 3/4"	Matte Black	ONA-15010-SMB
1-1/2" with 1/2" projection	3/8" - 3/4"	Brushed Stainless	ONA-15012-SBR
1-1/2" with 1/2" projection	3/8" - 3/4"	Matte Black	ONA-15012-SMB
1-15/16" with 1" projection	3/8" - 3/4"	Brushed Stainless	ONA-20010-SBR
1-15/16" with 1" projection	3/8" - 3/4"	Matte Black	ONA-20010-SMB
1-15/16" with 1/2" projection	3/8" - 3/4"	Brushed Stainless	ONA-20012-SBR
1-15/16" with 1/2" projection	3/8" - 3/4"	Matte Black	ONA-20012-SMB

- Use C spanner or allen key to tighten



Threaded Stud

DESCRIPTION	SIZES
3/8" - 16 thread	2 in & 2-1/2 in

ITEM
2 in: ONA-AN903-SBR

2-1/2 in: ONA-AN902-SBR

- Quantity: pack of 10
- Material: Stainless Steel 316



Bracket Hanger Screw

DESCRIPTION	SIZE
3/8" - 16 thread	3-1/2 in OAL

ITEM
ONA-AN901-SBR

- Quantity: pack of 10
- Material: Stainless Steel 316

VetroClamp

▶ SPIGOTS

Upgrade safety and elegance in areas like pools or hazardous spaces with our innovative spigot line, engineered for both adjustability and aesthetic appeal. Available in sophisticated Matte Black and Brushed Stainless finishes.

Reimagine safety and convenience in glass fencing with our versatile hinge collection designed to mount seamlessly to glass, walls, tubing, and square posts.

Enhance the sophistication and adaptability of your glass structures with our comprehensive glass connector range, encompassing wall mounting options, both adjustable and fixed variations, and catering to both round and square designs.



VETROCLAMP Spigots



Spigot Surface Mount

Material: Stainless Steel 316

DESCRIPTION	GLASS SIZE	FINISH	ITEM
Fully adjustable w/ cover plate	3/8" - 1/2"	Brushed Stainless	SSM-AD902-SBR
Fully adjustable w/ cover plate	3/8" - 1/2"	Matte Black	SSM-AD902-SMB

- Includes:
 - 3/8" glass gasket (x1)
 - 1/2" glass gasket (x1)
- Use HILTI screws to secure



Spigot Surface Mount with Cover Plate

Material: Stainless Steel 316

DESCRIPTION	GLASS SIZE	FINISH	ITEM
Glass tilt adjustable (left hand)	3/8" - 1/2"	Brushed Stainless	SSM-AD903-SBR
Glass tilt adjustable (left hand)	3/8" - 1/2"	Matte Black	SSM-AD903-SMB
Glass tilt adjustable (right hand)	3/8" - 1/2"	Brushed Stainless	SSM-AD905-SBR
Glass tilt adjustable (right hand)	3/8" - 1/2"	Matte Black	SSM-AD905-SMB

- Includes:
 - 3/8" glass gasket (x1)
 - 1/2" glass gasket (x1)
- Use HILTI screws to secure



Spigot Surface Mount

Material: Stainless Steel 316

DESCRIPTION	GLASS SIZE	FINISH	ITEM
Fully adjustable w/o cover plate	3/8" - 1/2"	Brushed Stainless	SSM-AD901-SBR
Fully adjustable w/o cover plate	3/8" - 1/2"	Matte Black	SSM-AD901-SMB

- Includes:
 - 3/8" glass gasket (x1)
 - 1/2" glass gasket (x1)
- Use HILTI screws to secure



Spigot Surface Mount 90° Adjustable with Cover Plate

Material: Stainless Steel 316

DESCRIPTION	GLASS SIZE	FINISH	ITEM
Glass tilt adjustable	3/8" - 1/2"	Brushed Stainless	SSM-CR901-SBR
Glass tilt adjustable	3/8" - 1/2"	Matte Black	SSM-CR901-SMB

- Includes:
 - 3/8" glass gasket (x1)
 - 1/2" glass gasket (x1)
- Use HILTI screws to secure



Spigot Surface Mount 180° Adjustable with Cover Plate

Material: Stainless Steel 316

DESCRIPTION	GLASS SIZE	FINISH	ITEM
Glass tilt adjustable	3/8" - 1/2"	Brushed Stainless	SSM-IN901-SBR
Glass tilt adjustable	3/8" - 1/2"	Matte Black	SSM-IN901-SMB

- Includes:
 - 3/8" glass gasket (x1)
 - 1/2" glass gasket (x1)
- Use HILTI screws to secure



Spigot Surface Mount Non-Adjustable with Cover Plate

Material: Stainless Steel 316

DESCRIPTION	GLASS SIZE	FINISH	ITEM
Glass tilt adjustable	9/16" - 11/16"	Brushed Stainless	SSM-AD904-SBR
Glass tilt adjustable	9/16" - 11/16"	Matte Black	SSM-AD904-SMB

- Includes:
 - 5/16" glass gasket (x1)
 - 7/8" glass gasket (x1)
- Use HILTI screws to secure



Spigot Core Mount Non-Adjustable with Cover Plate

Material: Stainless Steel 316

DESCRIPTION	GLASS SIZE	FINISH	ITEM
Non-adjustable	3/8" - 9/16"	Brushed Stainless	SCO-NA901-SBR
Non-adjustable	3/8" - 9/16"	Matte Black	SCO-NA901-SMB

- Includes:
 - 1/2" glass gasket (x1)
 - 9/16" glass gasket (x1)



Spigot Fascia Mount - Adjustable

Material: Stainless Steel 316

DESCRIPTION	GLASS SIZE	FINISH	ITEM
Glass tilt adjustable	3/8" - 1/2"	Brushed Stainless	SFM-AD901-SBR
Glass tilt adjustable	3/8" - 1/2"	Matte Black	SFM-AD901-SMB

- Includes:
 - 1/2" glass gasket (x1)
 - 3/8" glass gasket (x1)

Spigot Fascia Mount, Adjustable

Gate Spring Hinge, Glass to Glass



DESCRIPTION	GLASS SIZE
Spring loaded	5/16" - 1/2"
FINISH	
Brushed Stainless or Matte Black	
ITEM	
Brushed Stainless:	SGT-HI901-SBR
Matte Black:	SGT-HI901-SMB

- Material: Stainless Steel 316



DESCRIPTION	GLASS SIZE
Spring loaded	5/16" - 1/2"
FINISH	
Brushed Stainless or Matte Black	
ITEM	
Brushed Stainless:	SGT-HI904-SBR
Matte Black:	SGT-HI904-SMB

- Material: Stainless Steel 316

Gate Spring Hinge, Glass to Round Post



DESCRIPTION	GLASS SIZE
Spring loaded	5/16" - 1/2"
FINISH	
Brushed Stainless or Matte Black	
ITEM	
Brushed Stainless: SGT-HI902-SBR	
Matte Black: SGT-HI902-SMB	
<ul style="list-style-type: none"> Material: Stainless Steel 316 	

Gate Spring Hinge, Glass to Square Post or Wall



DESCRIPTION	GLASS SIZE
Spring loaded	5/16" - 1/2"
FINISH	
Brushed Stainless or Matte Black	
ITEM	
Brushed Stainless: SGT-HI903-SBR	
Matte Black: SGT-HI903-SMB	
<ul style="list-style-type: none"> Material: Stainless Steel 316 	

Gate Latch 180°



DESCRIPTION	GLASS SIZE
Magnetic	5/16" - 1/2"
FINISH	
Brushed Stainless or Matte Black	
ITEM	
Brushed Stainless: SGT-LA180-SBR	
Matte Black: SGT-LA180-SMB	
<ul style="list-style-type: none"> Material: Stainless Steel 316 	

Gate Latch 90°, Inside Corner



DESCRIPTION	GLASS SIZE
Magnetic	5/16" - 1/2"
FINISH	
Brushed Stainless or Matte Black	
ITEM	
Brushed Stainless: SGT-LA903-SBR	
Matte Black: SGT-LA903-SMB	
<ul style="list-style-type: none"> Material: Stainless Steel 316 	

Gate Latch 90° Outside Corner



DESCRIPTION	GLASS SIZE
Magnetic	5/16" - 1/2"
FINISH	
Brushed Stainless or Matte Black	
ITEM	
Brushed Stainless: SGT-LA902-SBR	
Matte Black: SGT-LA902-SMB	
<ul style="list-style-type: none"> Material: Stainless Steel 316 	



Square Glass to Glass Connector 90° - 180°

Material: Stainless Steel 316

DESCRIPTION	GLASS SIZE	FINISH	ITEM
Adjustable glass mount connector	3/8" - 1/2"	Brushed Stainless	SGC-AD180-SBR
Adjustable glass mount connector	3/8" - 1/2"	Matte Black	SGC-AD180-SMB



Square Glass to Glass Connector 90°

Material: Stainless Steel 316

DESCRIPTION	GLASS SIZE	FINISH	ITEM
Non-adjustable glass mount connector	3/8" - 1/2"	Brushed Stainless	SGC-NA090-SBR
Non-adjustable glass mount connector	3/8" - 1/2"	Matte Black	SGC-NA090-SMB



Square Glass to Glass Connector 90°

Material: Stainless Steel 316

DESCRIPTION	GLASS SIZE	FINISH	ITEM
Non-adjustable glass mount connector	3/8" - 1/2"	Brushed Stainless	SGC-NA091-SBR
Non-adjustable glass mount connector	3/8" - 1/2"	Matte Black	SGC-NA091-SMB



Square Glass to Glass Connector 135°

Material: Stainless Steel 316

DESCRIPTION	GLASS SIZE	FINISH	ITEM
Non-adjustable glass mount connector	3/8" - 1/2"	Brushed Stainless	SGC-NA135-SBR
Non-adjustable glass mount connector	3/8" - 1/2"	Matte Black	SGC-NA135-SMB



Square Glass to Glass Connector 180°

Material: Stainless Steel 316

DESCRIPTION	GLASS SIZE	FINISH	ITEM
Non-adjustable glass mount connector	3/8" - 1/2"	Brushed Stainless	SGC-NA180-SBR
Non-adjustable glass mount connector	3/8" - 1/2"	Matte Black	SGC-NA180-SMB



Square Extended Glass to Glass Connector

Material: Stainless Steel 316

DESCRIPTION	GLASS SIZE	FINISH	ITEM
Non-adjustable glass mount connector	3/8" - 1/2"	Brushed Stainless	SGC-NA901-SBR
Non-adjustable glass mount connector	3/8" - 1/2"	Matte Black	SGC-NA901-SMB



Round Glass to Glass Connector 90°

Material: Stainless Steel 316

DESCRIPTION	GLASS SIZE	FINISH	ITEM
Non-adjustable glass mount connector	5/16" - 1/2"	Brushed Stainless	SGC-NA092-SBR
Non-adjustable glass mount connector	5/16" - 1/2"	Matte Black	SGC-NA092-SMB



Round Glass to Glass Connector 180°

Material: Stainless Steel 316

DESCRIPTION	GLASS SIZE	FINISH	ITEM
Non-adjustable glass mount connector	5/16" - 1/2"	Brushed Stainless	SGC-NA181-SBR
Non-adjustable glass mount connector	5/16" - 1/2"	Matte Black	SGC-NA181-SMB

VetroRail

▶ HANDRAILS

Elevate your architectural projects with our versatile handrail line, boasting an extensive array of joining options and styles to perfectly complement any design.



Available in Matte Black and Brushed Stainless finishes, our handrails are meticulously crafted from 316 stainless steel.

Whether it's wall-mounted, glass-mounted, or adjustable, our handrails combine functionality and style seamlessly, ensuring a perfect fit for any project.

VETRO RAIL Handrails



Handrail Tubes

Material: Stainless Steel 316

DESCRIPTION	THICKNESS	FINISH	LENGTH	ITEM
1.50" O/D	0.079"	Brushed Stainless	20 ft	HTU-15901-SBR
1.50" O/D	0.079"	Matte Black	20 ft	HTU-15901-SMB
1.66" O/D	0.079"	Brushed Stainless	20 ft	HTU-16901-SBR
1.66" O/D	0.079"	Matte Black	20 ft	HTU-16901-SMB
1.90" O/D	0.079"	Brushed Stainless	20 ft	HTU-19901-SBR
1.90" O/D	0.079"	Matte Black	20 ft	HTU-19901-SMB

Glass Mounted Adjustable Saddle & Riser

Material: Stainless Steel 316



DESCRIPTION	Ø	FINISH	ITEM
For 1.55", 1.66" & 1.90" O/D tube & square tube	5/8"	Brushed Stainless	HGG-AD902-SBR
For 1.55", 1.66" & 1.90" O/D tube & square tube	5/8"	Matte Black	HGG-AD902-SMB
For 1.55", 1.66" & 1.90" O/D tube & square tube, 1.5" clearance	5/8"	Brushed Stainless	HGG-AD901-SBR
For 1.55", 1.66" & 1.90" O/D tube & square tube, 1.5" clearance	5/8"	Matte Black	HGG-AD901-SMB

- Use 5/16 - 18 tap and F drill
- Use C spanner or allen wrench for tightening
- Includes:
 - Glass mounted handrail bracket (x1)
 - 1.55" tube saddle (x1)
 - 1.66" tube saddle (x1)
 - 1.90" tube saddle (x1)
 - Flat saddle (x1)
 - 5/16"-18 screw for attaching tubing (x2)

Glass Mounted Fixed Saddle & Adjustable Riser

Material: Stainless Steel 316



DESCRIPTION	Ø	FINISH	ITEM
For 1.55", 1.66" & 1.90" O/D tube & square tube	5/8"	Brushed Stainless	HGG-FX901-SBR
For 1.55", 1.66" & 1.90" O/D tube & square tube	5/8"	Matte Black	HGG-FX901-SMB
For 1.55", 1.66" & 1.90" O/D tube & square tube, 1.5" clearance	5/8"	Brushed Stainless	HGG-FX902-SBR
For 1.55", 1.66" & 1.90" O/D tube & square tube, 1.5" clearance	5/8"	Matte Black	HGG-FX902-SMB

- Use 5/16 - 18 tap and F drill
- Use C spanner or allen wrench for tightening
- Includes:
 - Glass mounted handrail bracket (x1)
 - 1.55" tube saddle (x1)
 - 1.66" tube saddle (x1)
 - 1.90" tube saddle (x1)
 - Flat saddle (x1)
 - 5/16"-18 screw for attaching tubing (x2)

Glass Mounted Fixed Brackets, Curved 3" Projection

Material: Stainless Steel 316



DESCRIPTION	Ø	FINISH	ITEM
For 1.55" , 1.66" & 1.90" O/D tube & square tube	5/8"	Brushed Stainless	HGG-15901-SBR
For 1.55" , 1.66" & 1.90" O/D tube & square tube	5/8"	Matte Black	HGG-15901-SMB
For 1.55" , 1.66" & 1.90" O/D tube & square tube, 1.5" clearance	5/8"	Brushed Stainless	HGG-15902-SBR
For 1.55" , 1.66" & 1.90" O/D tube & square tube, 1.5" clearance	5/8"	Matte Black	HGG-15902-SMB

- Use 5/16 - 18 tap and F drill
- Use C spanner or allen wrench for tightening
- Includes:
 - Glass mounted handrail bracket (x1)
 - 1.55" tube saddle (x1)
 - 1.66" tube saddle (x1)
 - 1.90" tube saddle (x1)
 - Flat saddle (x1)
 - 5/16"-18 screw for attaching tubing (x2)

Wall Mounted Adjustable Saddle & Riser

Material: Stainless Steel 316



DESCRIPTION	FINISH	ITEM
For 1.55" , 1.66" & 1.90" O/D tube & square tube	Brushed Stainless	HWB-AD903-SBR
For 1.55" , 1.66" & 1.90" O/D tube & square tube	Matte Black	HWB-AD903-SMB
For 1.55" , 1.66" & 1.90" O/D tube & square tube, 1.5" clearance	Brushed Stainless	HWB-AD901-SBR
For 1.55" , 1.66" & 1.90" O/D tube & square tube, 1.5" clearance	Matte Black	HWB-AD901-SMB

- Use 5/16 - 18 tap and F drill
- Use C spanner or allen wrench for tightening
- Includes:
 - Wall mounted handrail bracket (x1)
 - 1.55" tube saddle (x1)
 - 1.66" tube saddle (x1)
 - 1.90" tube saddle (x1)
 - Flat saddle (x1)
 - 5/16"-18 screw for attaching tubing (x2)
 - Hanger bolt for wood (x1)

Wall Mounted Fixed Saddle & Adjustable Riser

Material: Stainless Steel 316



DESCRIPTION	FINISH	ITEM
For 1.55" , 1.66" & 1.90" O/D tube & square tube	Brushed Stainless	HWB-FS902-SBR
For 1.55" , 1.66" & 1.90" O/D tube & square tube	Matte Black	HWB-FS902-SMB
For 1.55" , 1.66" & 1.90" O/D tube & square tube, 1.5" clearance	Brushed Stainless	HWB-FS903-SBR
For 1.55" , 1.66" & 1.90" O/D tube & square tube, 1.5" clearance	Matte Black	HWB-FS903-SMB

- Use 5/16 - 18 tap and F drill
- Use C spanner or allen wrench for tightening
- Includes:
 - Wall mounted handrail bracket (x1)
 - 1.55" tube saddle (x1)
 - 1.66" tube saddle (x1)
 - 1.90" tube saddle (x1)
 - Flat saddle (x1)
 - 5/16"-18 screw for attaching tubing (x2)
 - Hanger bolt for wood (x1)

Wall Mounted, Fixed Projection & Saddle

Material: Stainless Steel 316



DESCRIPTION	FINISH	ITEM
For 1.55" , 1.66" & 1.90" O/D tube & square tube	Brushed Stainless	HWB-FS904-SBR
For 1.55" , 1.66" & 1.90" O/D tube & square tube	Matte Black	HWB-FS904-SMB

- Use 5/16 - 18 tap and F drill
- Includes:
 - Wall mounted handrail bracket (x1)
 - Flat saddle (x1)
 - 1.55" tube saddle (x1)
 - 5/16"-18 screw for attaching tubing (x2)
 - 1.66" tube saddle (x1)
 - Hanger bolt for wood (x1)
 - 1.90" tube saddle (x1)



Post Mounted, Adjustable Saddle & Riser

Material: Stainless Steel 316

DESCRIPTION	FINISH	ITEM
For 1.90" O/D post	Brushed Stainless	HBR-19907-SBR
For 1.90" O/D post	Matte Black	HBR-19907-SMB



Wall Mounted Bracket Cover

Material: Stainless Steel 316

DESCRIPTION	FINISH	ITEM
Bracket cover	Brushed Stainless	HWB-CP901-SBR
Bracket cover	Matte Black	HWB-CP901-SMB



Wall Flange, Fixed Male

Material: Stainless Steel 316

DESCRIPTION	SIZE	FINISH	ITEM
Adjustable wall flange, male	1.50" O/D	Brushed Stainless	HWF-15901-SBR
Adjustable wall flange, male	1.50" O/D	Matte Black	HWF-15901-SMB
Adjustable wall flange, male	1.66" O/D	Brushed Stainless	HWF-16901-SBR
Adjustable wall flange, male	1.66" O/D	Matte Black	HWF-16901-SMB
Fixed wall flange, male	1.90" O/D	Brushed Stainless	HWF-19901-SBR
Fixed wall flange, male	1.90" O/D	Matte Black	HWF-19901-SMB

- Screws not included



Wall Flange, Fixed Female

Material: Stainless Steel 316

DESCRIPTION	SIZE	FINISH	ITEM
Fixed wall flange, female	1.50" O/D	Brushed Stainless	HWF-15902-SBR
Fixed wall flange, female	1.50" O/D	Matte Black	HWF-15902-SMB
Fixed wall flange, female	1.66" O/D	Brushed Stainless	HWF-16902-SBR
Fixed wall flange, female	1.66" O/D	Matte Black	HWF-16902-SMB
Fixed wall flange, female	1.90" O/D	Brushed Stainless	HWF-19902-SBR
Fixed wall flange, female	1.90" O/D	Matte Black	HWF-19902-SMB

- Screws not included



Wall Flange, Adjustable Male

Material: Stainless Steel 316

DESCRIPTION	SIZE	FINISH	ITEM
Fixed wall flange, male	1.50" O/D	Brushed Stainless	HWF-15903-SBR
Fixed wall flange, male	1.50" O/D	Matte Black	HWF-15903-SMB
Fixed wall flange, male	1.66" O/D	Brushed Stainless	HWF-16903-SBR
Fixed wall flange, male	1.66" O/D	Matte Black	HWF-16903-SMB
Adjustable wall flange, male	1.90" O/D	Brushed Stainless	HWF-19903-SBR
Adjustable wall flange, male	1.90" O/D	Matte Black	HWF-19903-SMB

- Screws not included

Inline Connector

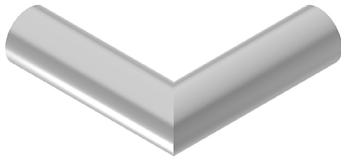
Material: Stainless Steel 316



DESCRIPTION	FINISH	ITEM
For 1.50" O/D tube	Brushed Stainless	HCO-15901-SBR
For 1.50" O/D tube	Matte Black	HCO-15901-SMB
For 1.66" O/D tube	Brushed Stainless	HCO-16901-SBR
For 1.66" O/D tube	Matte Black	HCO-16901-SMB
For 1.90" O/D tube	Brushed Stainless	HCO-19901-SBR
For 1.90" O/D tube	Matte Black	HCO-19901-SMB

Fabricated Corner 90°

Material: Stainless Steel 316



DESCRIPTION	FINISH	ITEM
For 1.50" O/D tube	Brushed Stainless	HCR-15901-SBR
For 1.50" O/D tube	Matte Black	HCR-15901-SMB
For 1.66" O/D tube	Brushed Stainless	HCR-16901-SBR
For 1.66" O/D tube	Matte Black	HCR-16901-SMB
For 1.90" O/D tube	Brushed Stainless	HCR-19901-SBR
For 1.90" O/D tube	Matte Black	HCR-19901-SMB

Fabricated Corner 135°

Material: Stainless Steel 316



DESCRIPTION	FINISH	ITEM
For 1.50" O/D tube	Brushed Stainless	HCR-15135-SBR
For 1.50" O/D tube	Matte Black	HCR-15135-SMB
For 1.66" O/D tube	Brushed Stainless	HCR-16135-SBR
For 1.66" O/D tube	Matte Black	HCR-16135-SMB
For 1.90" O/D tube	Brushed Stainless	HCR-19135-SBR
For 1.90" O/D tube	Matte Black	HCR-19135-SMB

Adjustable Corner 0° - 70°

Material: Stainless Steel 316



DESCRIPTION	FINISH	ITEM
For 1.50" O/D tube	Brushed Stainless	HEL-15901-SBR
For 1.50" O/D tube	Matte Black	HEL-15901-SMB
For 1.66" O/D tube	Brushed Stainless	HEL-16901-SBR
For 1.66" O/D tube	Matte Black	HEL-16901-SMB
For 1.90" O/D tube	Brushed Stainless	HEL-19901-SBR
For 1.90" O/D tube	Matte Black	HEL-19901-SMB

Adjustable Compound Elbow, Right

Material: Stainless Steel 316



DESCRIPTION	FINISH	ITEM
For 1.50" O/D tube	Brushed Stainless	HEL-15902-SBR
For 1.50" O/D tube	Matte Black	HEL-15902-SMB
For 1.66" O/D tube	Brushed Stainless	HEL-16902-SBR
For 1.66" O/D tube	Matte Black	HEL-16902-SMB
For 1.90" O/D tube	Brushed Stainless	HEL-19902-SBR
For 1.90" O/D tube	Matte Black	HEL-19902-SMB

- One end vertically adjustable, other is 90° horizontal corner

Adjustable Compound Elbow, Left

Material: Stainless Steel 316



DESCRIPTION	FINISH	ITEM
For 1.50" O/D tube	Brushed Stainless	HEL-15903-SBR
For 1.50" O/D tube	Matte Black	HEL-15903-SMB
For 1.66" O/D tube	Brushed Stainless	HEL-16903-SBR
For 1.66" O/D tube	Matte Black	HEL-16903-SMB
For 1.90" O/D tube	Brushed Stainless	HEL-19903-SBR
For 1.90" O/D tube	Matte Black	HEL-19903-SMB

- One end vertically adjustable, other is 90° horizontal corner

Non-Adjustable Crisp Corner 90°

Material: Stainless Steel 316



DESCRIPTION	FINISH	ITEM
For 1.50" O/D tube	Brushed Stainless	HEL-15904-SBR
For 1.50" O/D tube	Matte Black	HEL-15904-SMB
For 1.66" O/D tube	Brushed Stainless	HEL-16904-SBR
For 1.66" O/D tube	Matte Black	HEL-16904-SMB
For 1.90" O/D tube	Brushed Stainless	HEL-19904-SBR
For 1.90" O/D tube	Matte Black	HEL-19904-SMB

Non-Adjustable Smooth Corner 90°

Material: Stainless Steel 316



DESCRIPTION	FINISH	ITEM
For 1.50" O/D tube	Brushed Stainless	HEL-15905-SBR
For 1.50" O/D tube	Matte Black	HEL-15905-SMB
For 1.66" O/D tube	Brushed Stainless	HEL-16905-SBR
For 1.66" O/D tube	Matte Black	HEL-16905-SMB
For 1.90" O/D tube	Brushed Stainless	HEL-19905-SBR
For 1.90" O/D tube	Matte Black	HEL-19905-SMB

Non-Adjustable Rounded Corner 90°

Material: Stainless Steel 316



DESCRIPTION	FINISH	ITEM
For 1.50" O/D tube	Brushed Stainless	HEL-15906-SBR
For 1.50" O/D tube	Matte Black	HEL-15906-SMB
For 1.66" O/D tube	Brushed Stainless	HEL-16906-SBR
For 1.66" O/D tube	Matte Black	HEL-16906-SMB
For 1.90" O/D tube	Brushed Stainless	HEL-19906-SBR
For 1.90" O/D tube	Matte Black	HEL-19906-SMB

Wall Return 90°

Material: Stainless Steel 316



DESCRIPTION	FINISH	ITEM
For 1.50" O/D tube	Brushed Stainless	HRT-15901-SBR
For 1.50" O/D tube	Matte Black	HRT-15901-SMB
For 1.66" O/D tube	Brushed Stainless	HRT-16901-SBR
For 1.66" O/D tube	Matte Black	HRT-16901-SMB
For 1.90" O/D tube	Brushed Stainless	HRT-19901-SBR
For 1.90" O/D tube	Matte Black	HRT-19901-SMB

End Cap

Material: Stainless Steel 316



DESCRIPTION	FINISH	ITEM
For 1.50" O/D tube	Brushed Stainless	HEC-15901-SBR
For 1.50" O/D tube	Matte Black	HEC-15901-SMB
For 1.66" O/D tube	Brushed Stainless	HEC-16901-SBR
For 1.66" O/D tube	Matte Black	HEC-16901-SMB
For 1.90" O/D tube	Brushed Stainless	HEC-19901-SBR
For 1.90" O/D tube	Matte Black	HEC-19901-SMB



Bracket Spare Saddle Screw

Material: Stainless Steel 316

DESCRIPTION	FINISH	ITEM
#10 x 5/8"	Brushed Stainless	HBR-SC901-SBR
#10 x 3/4"	Brushed Stainless	HBR-SC902-SBR
1/4" x 5/8"	Brushed Stainless	HBR-SC903-SBR

- Quantity: pack of 10



Handrail Bracket Wood Screw

DESCRIPTION

Countersunk 3/4"

ITEM

HBR-SC904-SBR

- Quantity: pack of 10
- Material: Stainless Steel 316



Bracket Hanger Screw

ITEM

HBR-SC905-SBR

- Quantity: pack of 10
- Material: Stainless Steel 316



Loctite Epoxy EA9017

DESCRIPTION

For bonding railing connections

SIZE

29.5 ml ready-mix syringe

ITEM

HAC-AH901

- Creates a permanent bond



Touch Up Paint Pen

DESCRIPTION

Matte Black

ITEM

SAC-MB901

VETRORAIL Caprails



Round Tube

Material: Stainless Steel 316

DESCRIPTION	GLASS SIZE	LENGTH	FINISH	ITEM
For 1.66" O/D	1/2" - 3/4"	20 ft	Brushed Stainless	CRS-RS016-SBR
For 1.66" O/D	1/2" - 3/4"	20 ft	Matte Black	CRS-RS016-SMB
For 1.90" O/D	1/2" - 3/4"	20 ft	Brushed Stainless	CRS-RS019-SBR
For 1.90" O/D	1/2" - 3/4"	20 ft	Matte Black	CRS-RS019-SMB

- Gasket required



Round Inline Connector

Material: Stainless Steel 316

DESCRIPTION	FINISH	ITEM
For 1.66" O/D	Brushed Stainless	CRS-IN016-SBR
For 1.66" O/D	Matte Black	CRS-IN016-SMB
For 1.90" O/D	Brushed Stainless	CRS-IN019-SBR
For 1.90" O/D	Matte Black	CRS-IN019-SMB

- Use HAC-AH901 glue to secure



Round Adjustable Corner Up Elbow

Material: Stainless Steel 316

DESCRIPTION	FINISH	ITEM
For 1.66" O/D	Brushed Stainless	CRS-AU016-SBR
For 1.66" O/D	Matte Black	CRS-AU016-SMB
For 1.90" O/D	Brushed Stainless	CRS-AU019-SBR
For 1.90" O/D	Matte Black	CRS-AU019-SMB

- Adjustable 22-55°
- Use HAC-AH901 glue to secure



Round Adjustable Corner Down Elbow

Material: Stainless Steel 316

DESCRIPTION	FINISH	ITEM
For 1.66" O/D	Brushed Stainless	CRS-AD016-SBR
For 1.66" O/D	Matte Black	CRS-AD016-SMB
For 1.90" O/D	Brushed Stainless	CRS-AD019-SBR
For 1.90" O/D	Matte Black	CRS-AD019-SMB

- Adjustable 22-55°
- Use HAC-AH901 glue to secure



Round Slotted 90° Horizontal Corner

Material: Stainless Steel 316

DESCRIPTION	FINISH	ITEM
For 1.66" O/D	Brushed Stainless	CRS-9H016-SBR
For 1.66" O/D	Matte Black	CRS-9H016-SMB
For 1.90" O/D	Brushed Stainless	CRS-9H019-SBR
For 1.90" O/D	Matte Black	CRS-9H019-SMB

- Use HAC-AH901 glue to secure



Round Slotted 90° Vertical Elbow

Material: Stainless Steel 316

DESCRIPTION	FINISH	ITEM
For 1.66" O/D	Brushed Stainless	CRS-9V016-SBR
For 1.66" O/D	Matte Black	CRS-9V016-SMB
For 1.90" O/D	Brushed Stainless	CRS-9V019-SBR
For 1.90" O/D	Matte Black	CRS-9V019-SMB

- Use HAC-AH901 glue to secure



Round Wall Flange

Material: Stainless Steel 316

DESCRIPTION	FINISH	ITEM
For 1.66" O/D	Brushed Stainless	CRS-WP016-SBR
For 1.66" O/D	Matte Black	CRS-WP016-SMB
For 1.90" O/D	Brushed Stainless	CRS-WP019-SBR
For 1.90" O/D	Matte Black	CRS-WP019-SMB

- Screws not included



Round End Cap Flat

Material: Stainless Steel 316

DESCRIPTION	FINISH	ITEM
For 1.66" O/D	Brushed Stainless	CRS-EC016-SBR
For 1.66" O/D	Matte Black	CRS-EC016-SMB
For 1.90" O/D	Brushed Stainless	CRS-EC019-SBR
For 1.90" O/D	Matte Black	CRS-EC019-SMB

- Use HAC-AH901 glue to secure



U-Shaped Rail Channel

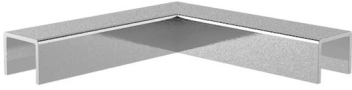
Material: Stainless Steel 316

DESCRIPTION	GLASS SIZE	LENGTH	FINISH	ITEM
Gasket required	1/2" - 13/16"	20 ft	Brushed Stainless	CUS-11901-SBR
Gasket required	1/2" - 13/16"	20 ft	Matte Black	CUS-11901-SMB
Glue on	1/2"	10 ft	Brushed Stainless	CUS-12120-SBR
Glue on	1/2"	10 ft	Matte Black	CUS-12120-SMB
Glue on	9/16"	10 ft	Brushed Stainless	CUS-09120-SBR
Glue on	9/16"	10 ft	Matte Black	CUS-09120-SMB
Glue on	3/4"	10 ft	Brushed Stainless	CUS-34120-SBR
Glue on	3/4"	10 ft	Matte Black	CUS-34120-SMB

- To secure:
 - CUS-12120-SBR & CUS-12120-SMB use WCD-AD901 tape
 - CUS-11901-SBR & CUS-11901-SMB use CGA-16011-RBL gasket
 - CUS-34120-SBR & CUS-34120-SMB use CGA-16019-RBL gasket
 - CUS-09120-SBR & CUS-09120-SMB use WCD-AD901 tape

U-Shaped Rail Channel, 90° Corner

Material: Stainless Steel 316



DESCRIPTION	GLASS SIZE	FINISH	ITEM
Gasket required	1/2" - 13/16"	Brushed Stainless	CUS-CR901-SBR
Gasket required	1/2" - 13/16"	Matte Black	CUS-CR901-SMB
Glue on	1/2"	Brushed Stainless	CUS-CR903-SBR
Glue on	1/2"	Matte Black	CUS-CR903-SMB
Glue on	9/16"	Brushed Stainless	CUS-CR904-SMB
Glue on	9/16"	Matte Black	CUS-CR904-SBR
Glue on	3/4"	Brushed Stainless	CUS-CR902-SBR
Glue on	3/4"	Matte Black	CUS-CR902-SMB

- Use HAC-AH901 glue to secure

U-Shaped Rail Channel, Flat End Cap

Material: Stainless Steel 316



DESCRIPTION	GLASS SIZE	FINISH	ITEM
Gasket required	1/2" - 13/16"	Brushed Stainless	CUS-EC901-SBR
Gasket required	1/2" - 13/16"	Matte Black	CUS-EC901-SMB
Glue on	1/2"	Brushed Stainless	CUS-EC903-SBR
Glue on	1/2"	Matte Black	CUS-EC903-SMB
Glue on	9/16"	Brushed Stainless	CUS-EC904-SBR
Glue on	9/16"	Matte Black	CUS-EC904-SMB
Glue on	3/4"	Brushed Stainless	CUS-EC902-SBR
Glue on	3/4"	Matte Black	CUS-EC902-SMB

- Use HAC-AH901 glue to secure

Gasket Insert

Material: Black Rubber



DESCRIPTION	GLASS	GLASS SIZE	LENGTH	ITEM
U-shaped cap rail	1.66" O/D	1/2" - 9/16"	20 ft	CGA-16011-RBL
U-shaped cap rail	1.66" O/D	5/8" - 11/16"	20 ft	CGA-16016-RBL
U-shaped cap rail	1.66" O/D	3/4"	20 ft	CGA-16019-RBL
Cap rail	1.66" O/D	13/16" - 7/8"	20 ft	CGA-16020-RBL
Cap rail	1.90" O/D	1/2" - 9/16"	20 ft	CGA-19011-RBL
Cap rail	1.90" O/D	5/8" - 11/16"	20 ft	CGA-19016-RBL
Cap rail	1.90" O/D	3/4"	20 ft	CGA-19019-RBL
Cap rail	1.90" O/D	13/16" - 7/8"	20 ft	CGA-19020-RBL
Cap rail	1.90" O/D	1"	20 ft	CGA-19024-RBL



Bohle | portals

10924 Granite Street, Suite 200, Charlotte, NC 28273

925 Lydia Ave, Kansas City, MO 64106

T +1 888 838 6006

support@portalshardware.com

www.portalshardware.com